

ANR Monthly Customer Update

AUGUST 2022

AUGUST 24, 2022



Agenda



- 1. Safety moment and TC Energy update**
DeAnna Parsell, Noms & Scheduling
- 2. Storage update**
Eric Tawney, Operations Planning
- 3. Operational update**
Kevin Pham, Operations Planning
- 4. Noms & scheduling update**
DeAnna Parsell, Noms & Scheduling

Safety moment: School Zone awareness

- Plan ahead to avoid rushing
- Be alert for school zones and school buses
- Always stop for school buses loading or unloading children
- Obey speed limits
- Avoid making U-turns, passing and changing lanes
- Watch out for school crossing guards and bike riders
- No texting or using cell phones

Renewable
energy
powering
renewable
energy

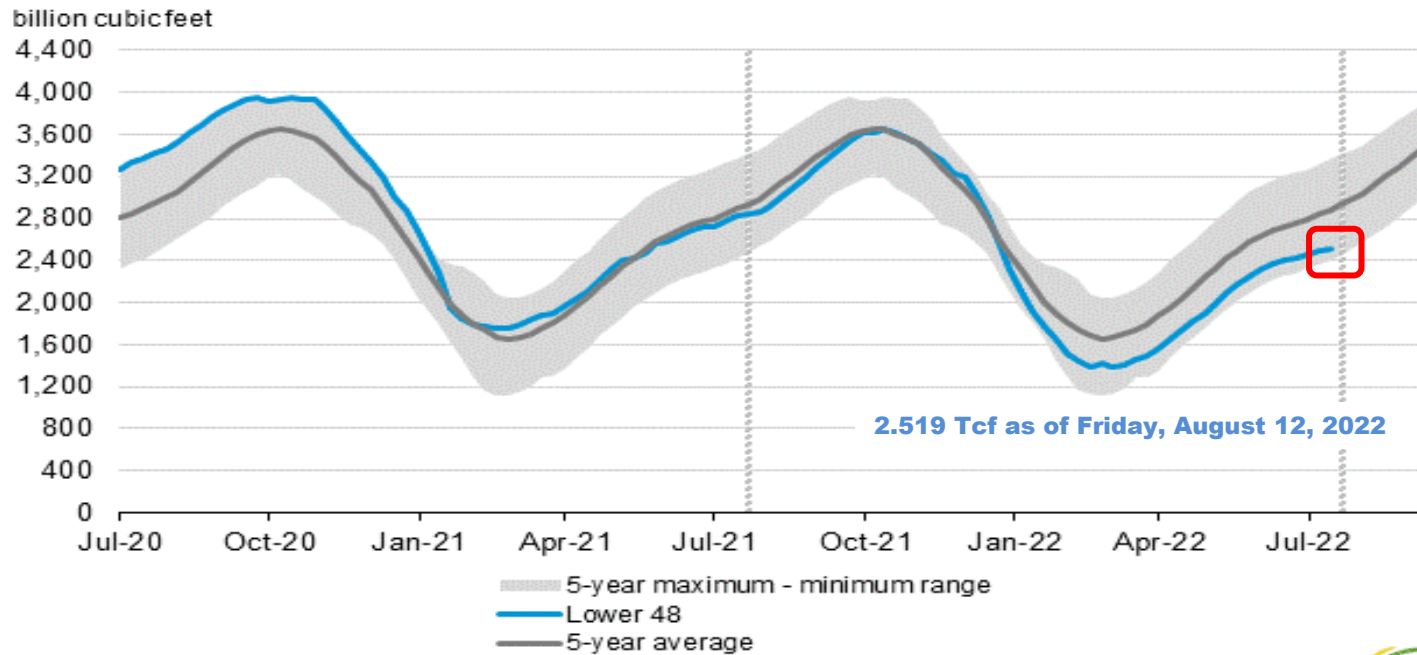


Storage update

Eric Tawney – Operations Planning

EIA storage position: The big picture

Working gas in underground storage compared with the five-year maximum and minimum



Source: U.S. Energy Information Administration



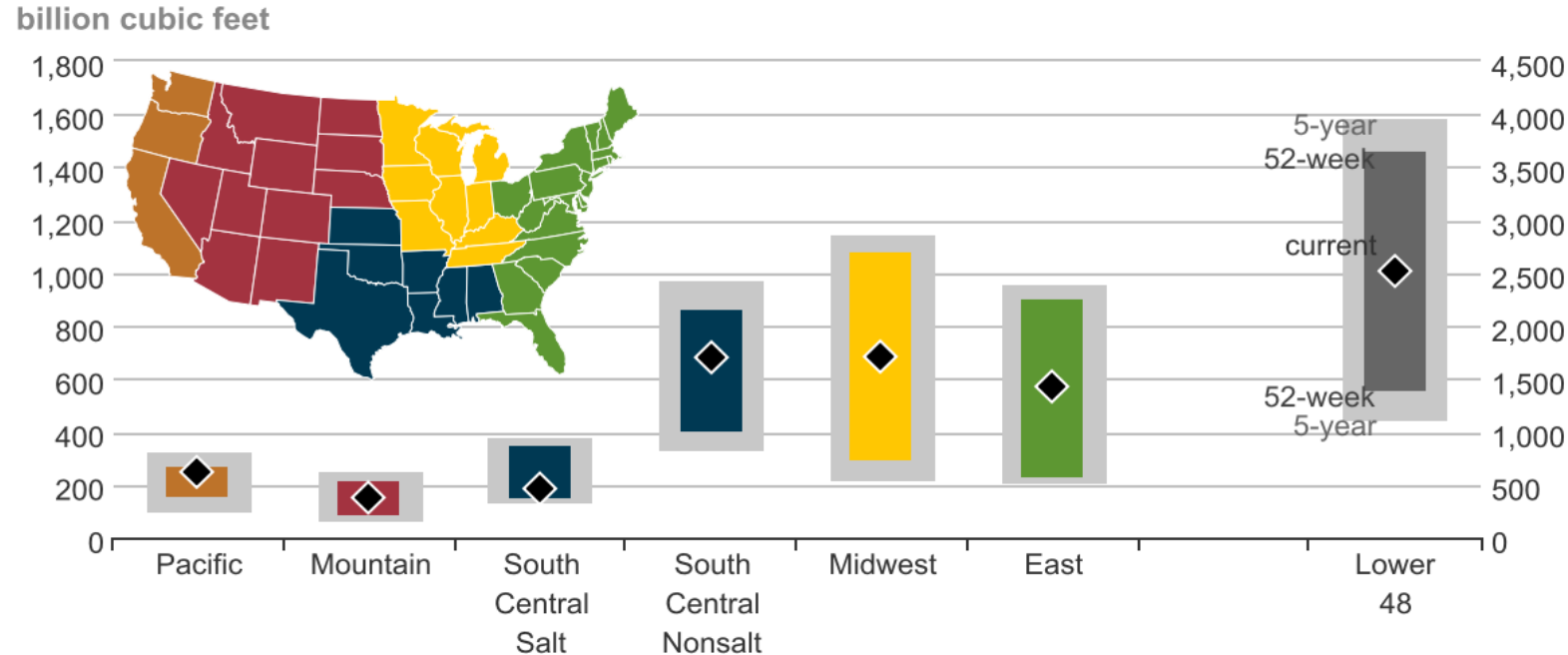
296 bcf
less than August 2021

367 bcf
below the five-year average



EIA storage position: The big picture

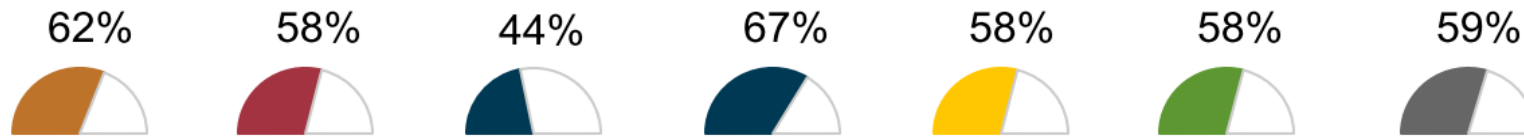
Underground working natural gas storage summary as of August 12, 2022



Lower 48
 current: 2,519
 5-year min: 1,107
 5-year max: 3,958
 52-week min: 1,382
 52-week max: 3,644

Midwest
 current: 684
 5-year min: 211
 5-year max: 1,139
 52-week min: 293
 52-week max: 1,079

Underground storage capacity utilization

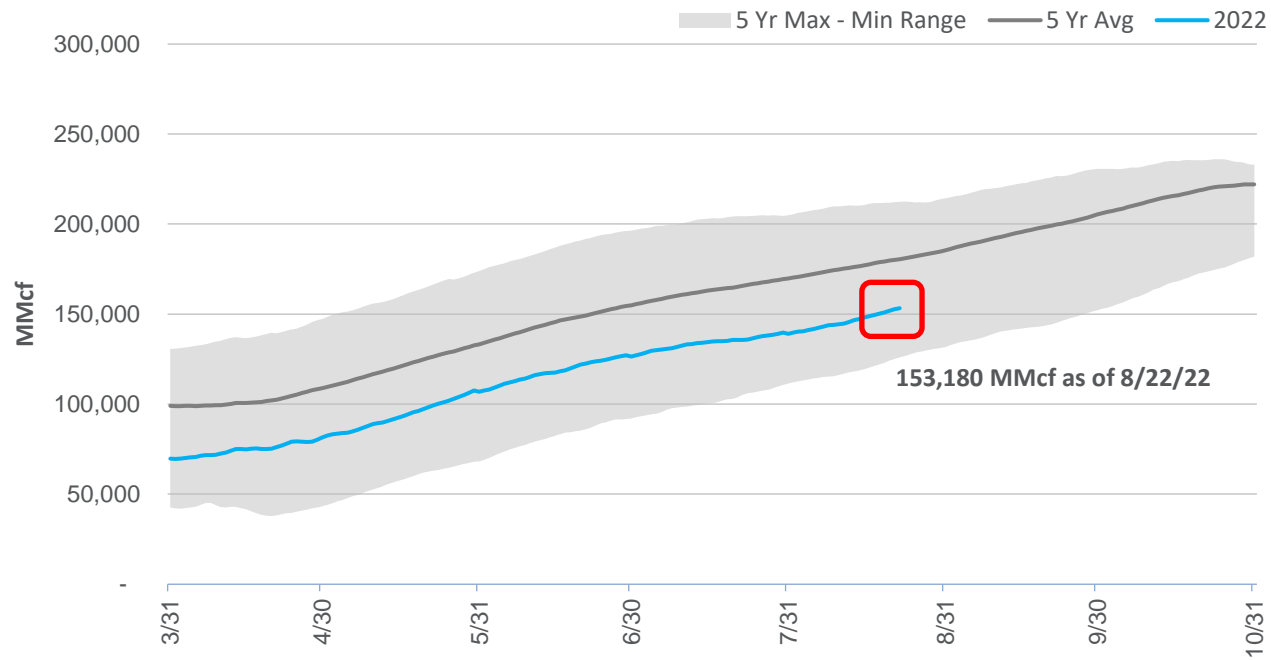


Source: U.S. Energy Information Administration



Storage position

Working gas in underground storage compared with the five-year maximum and minimum



32 bcf

less than August 2021

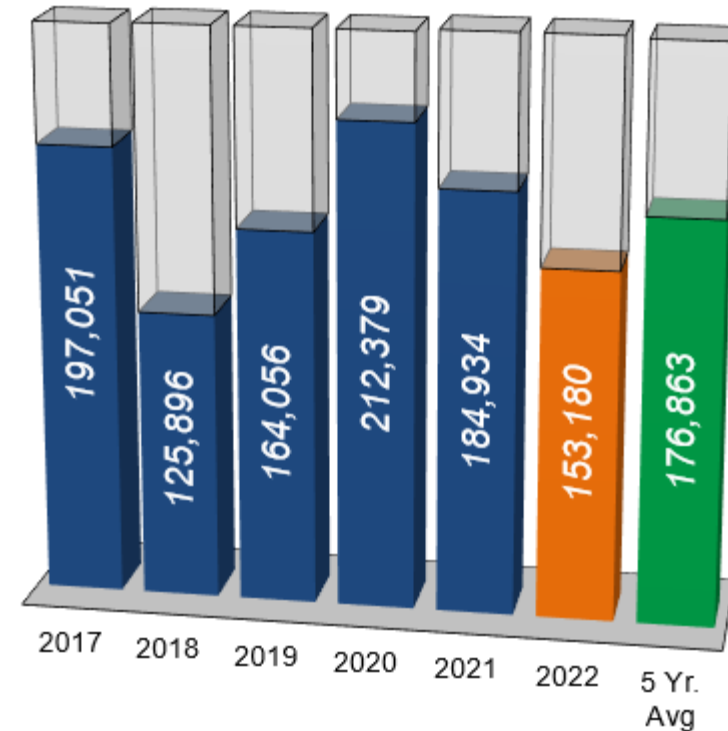
24 bcf

below the five-year average



Storage operations

- From Monday, July 18 – Tuesday, August 22, storage activity averaged an injection rate of 541-MMcf/d. Daily activity varied from an injection rate of 1.1-Bcf/d to a withdrawal rate of 28-MMcf/d.
- Storage capacity is 62 percent full with roughly two months left in the injection season.
- ANR has met all firm customer demand for storage activity.
- There are currently no postings restricting storage activity and no planned restrictions on DDS capacity.



**Total Storage is
62% Full**

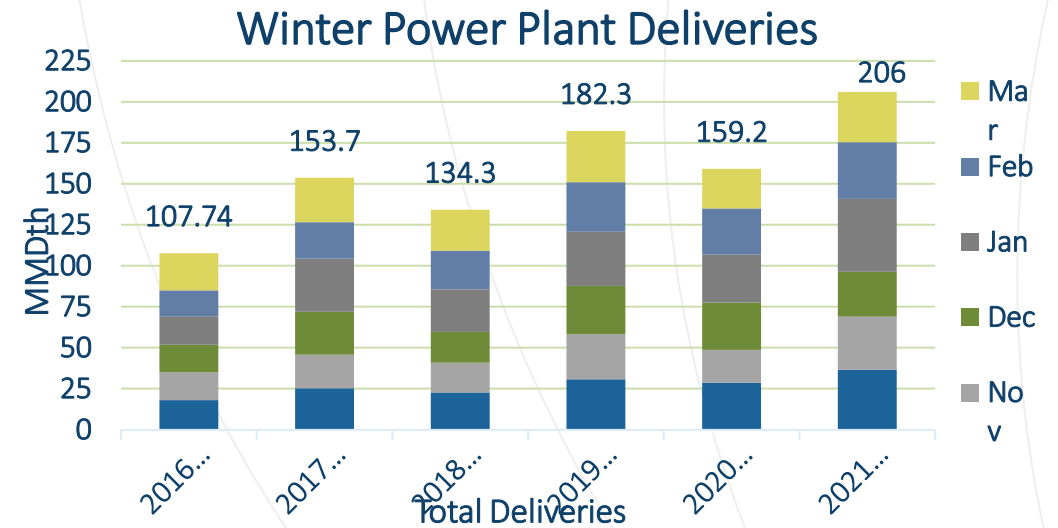
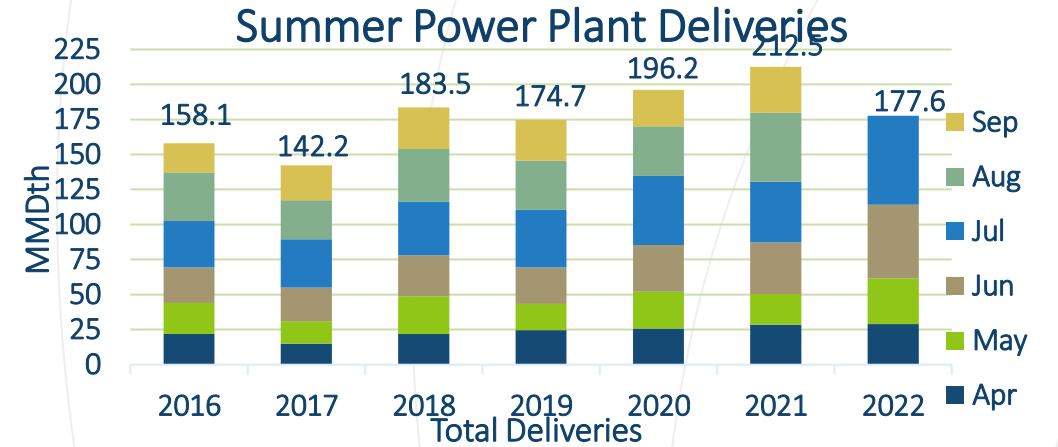
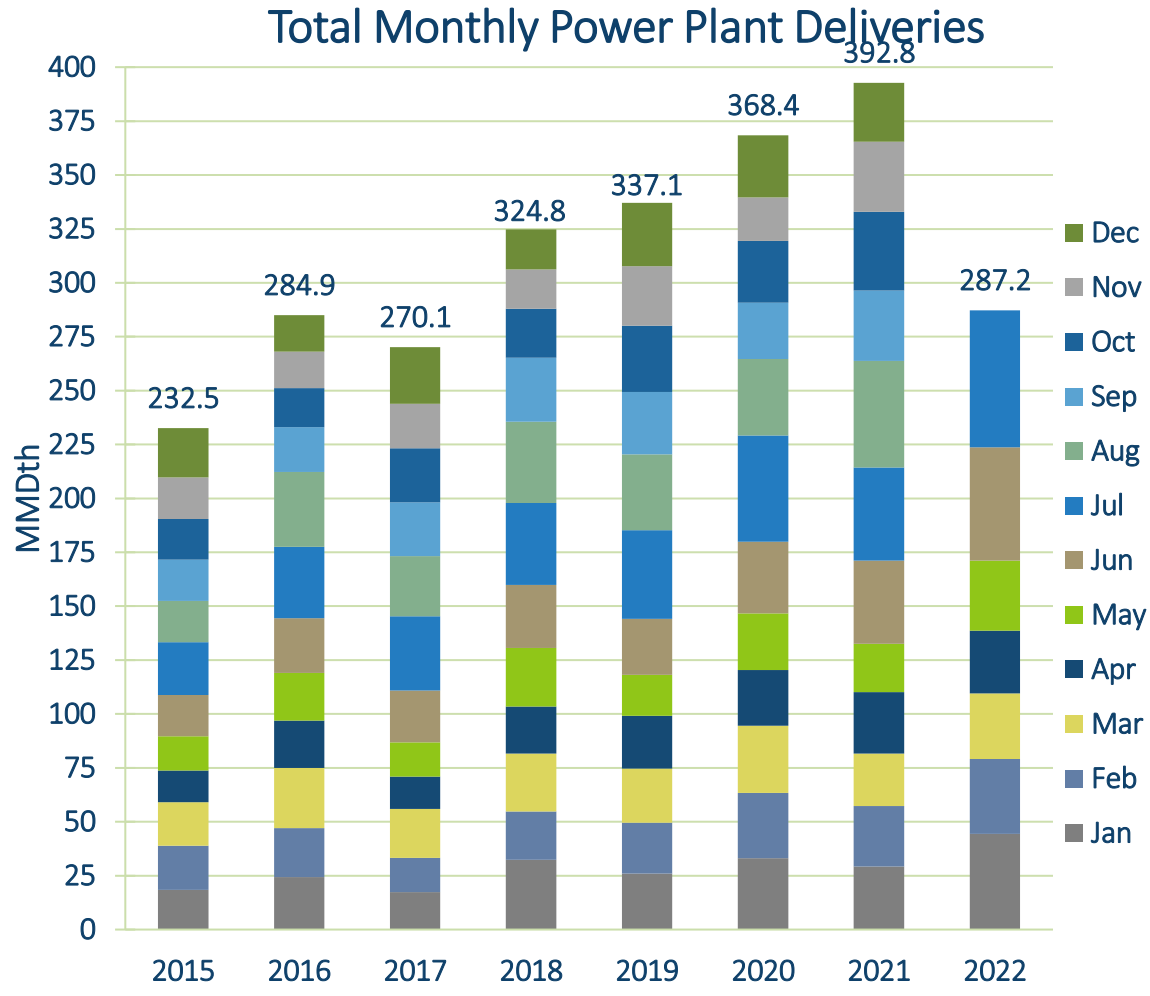
Storage operations

- Planned maintenance activities will occur throughout the summer. The impacts from these activities will be reflected on the EBB under the operationally available capacity.
- As shown, current storage content is lower than normal.
- Lower content combined with sustained high gas prices and power load demand are impacting our storage forecasts, indicating we will not fill by the end of the season.
- These factors will also result in significant variation in injection rates, even resulting in net withdrawals during high power load demand.

Operational update

Kevin Pham – Operations Planning

Monthly deliveries to Power Plants



Capacity impacts (SW Mainline & Area)

		Cap (MMcf/d)		August							September																																			
Dates	Area/Segment/Location	Impact	Avail																																											
Southwest Area & Mainline				24	25	26	27	28	29	30	31	1	2	3	4	5	6	7	8	9	10	11	12	13	14	15	16	17	18	19	20	21	22	23	24	25	26	27	28	29	30					
Southwest Mainline Northbound (LOC #226630)																																														
8/24 - 8/25	Maitland-Lineville ILI ANR 1-100 + Integrity Digs	100	590	■	■																																									
8/29 - 9/2	Lineville-Birmingham ILI ANR 1-100 + Integrity Digs	150	540					■	■	■	■	■																																		
9/14 - 9/15	Alden CS Separator and Scrubber Inspection	100	590																					■	■																					
9/20 - 9/21	Enterprise CS Inspection and Test + Integrity Digs	110	580																																											
9/22	Havensville CS Inspection and Test + Integrity Digs	110	580																																											
9/26 - 9/30	New Windsor CS Valve Replacement + Integrity Digs	100	590																																											



Capacity impacts (SE area)

		Cap (MMcf/d)		August							September																														
Dates	Area/Segment/Location	Impact	Avail																																						
Southeast Area				24	25	26	27	28	29	30	31	1	2	3	4	5	6	7	8	9	10	11	12	13	14	15	16	17	18	19	20	21	22	23	24	25	26	27	28	29	30
Stingray Int (LOC #135819)																																									
8/20 - 12/31/22	Pipeline - Integrity Issue / Hurricane Laura Damage	N/A	Shut In																																						
Multiple Meters - Cameron Area																																									
10/20 - 12/31/22	Meter Station - Hurricane Laura Damage	N/A	Shut In																																						
Shadyside/TGP Rec (LOC #467239)																																									
1/6 - 7/31	Meter Equipment Issue	N/A	Shut In																																						
Shadyside/TGP Del (LOC #467240)																																									
1/6 - 7/31	Meter Equipment Issue	N/A	Shut In																																						



Capacity impacts (SEML)

		Cap (MMcf/d)		August							September																																	
Dates	Area/Segment/Location	Impact	Avail																																									
Southeast Mainline				24	25	26	27	28	29	30	31	1	2	3	4	5	6	7	8	9	10	11	12	13	14	15	16	17	18	19	20	21	22	23	24	25	26	27	28	29	30			
Brownsville Southbound (LOC #1260569)																																												
8/29 - 8/30	Brownsville CS Unit 9 System Test and Inspection	207	898																																									
Cottage Grove Southbound (LOC #505614)																																												
9/8 - 9/30	Integrity Digs	245	903																																									
Jena Southbound (LOC #9505489)																																												
9/6 - 9/7	Jena CS Unit 108 Soak Wash and Borescope Inspection	235	947																																									



Outage postings

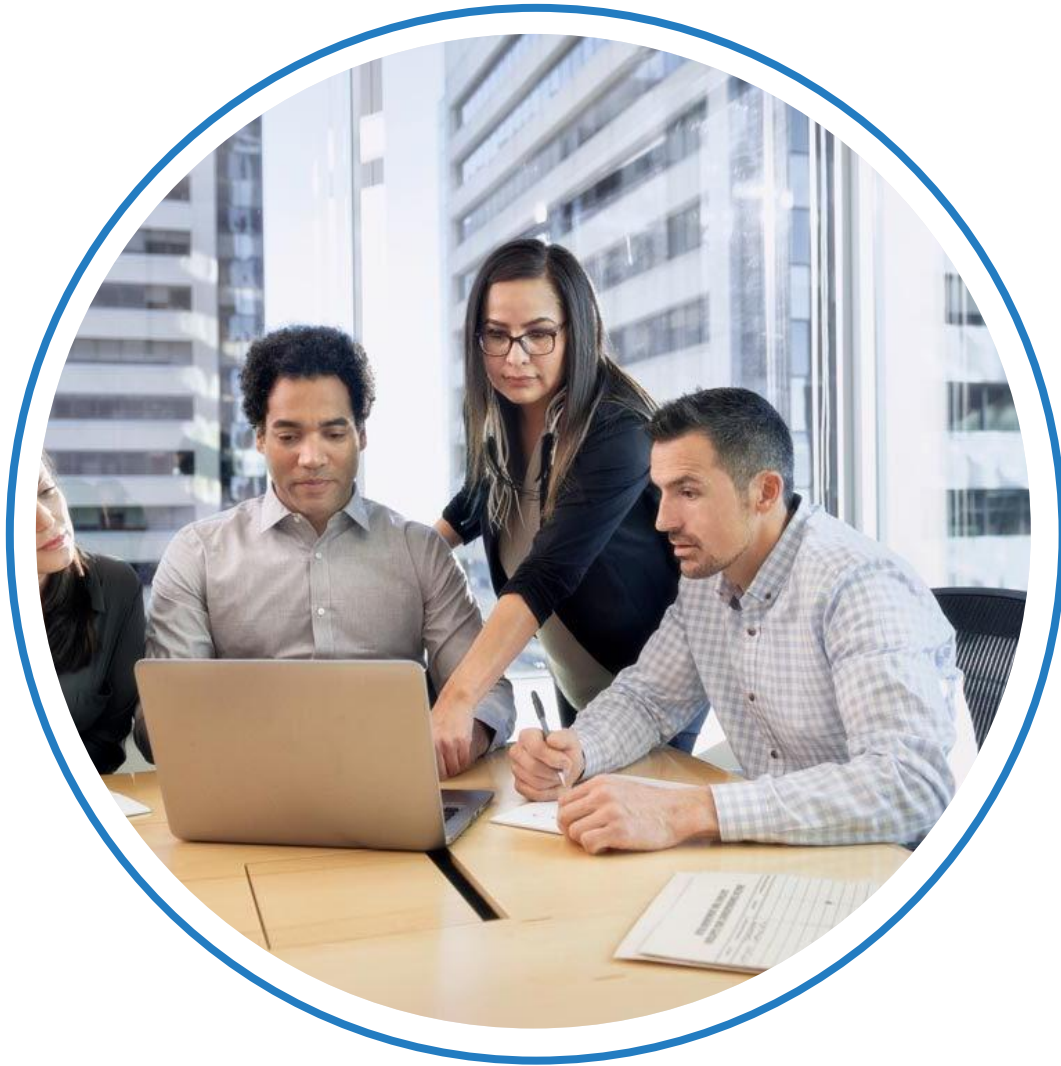
- Service impacts are estimates. Actual nominations, markets, weather and pipeline conditions determine any level of curtailments.
- Projects may be added, altered, delayed or cancelled. Emergent work cannot be planned and will happen from time to time.
- Notice of such planned work, including additions or changes, will be provided via a posting under the Planned Service Outage (PSO) category in GEMS. Emergent work will be posted under the Critical Notice category as soon as possible.



Nominations & Scheduling update

DeAnna Parsell – Noms & Scheduling

DDS Invoice Change



- Prior to August 1, 2022, interruptible Deferred Delivery Service (DDS) charges were calculated using the average daily storage balance as determined at the end of each month
- Effective August 1, 2022 (and subject to refund pending the outcome of the filing in Docket No RP22-501), DDS will be calculated using the ending daily storage balance
- Similar to how IPLS is billed
- You will now see an added column for daily ending balances on the invoice
- Adjustments prior to August 1, 2022, will use the old calculation



Reminders

- Rates have been updated effective August 1, 2022, subject to refund pending the outcome of the filing in Docket No RP22-501.
- We have been transitioning bank accounts for several months from our Citibank accounts to Bank of America
- Please ensure your payments are directed to the accounts shown on your monthly invoice

Coming Soon!

- TC eConnects – ANR Storage Company, Eaton Rapids and Blue Lake Gas Storage
- Security update – Multi-factor Authentication
- ANR Monthly Customer Update – Transition to Microsoft Teams!

ANR customer assistance

Please contact the ANR Noms & Scheduling team for customer assistance, including:

- Scheduling priorities
- Firm service rights and features
- GEMS new user training
- Virtual and face-to-face meetings



TOLL FREE

1-800-827-5267



GROUP EMAIL

[ANR Noms Scheduling@tcenergy.com](mailto:ANR_Noms_Scheduling@tcenergy.com)



WEBSITE FOR THE ANRPL
TARIFF

ebb.anrpl.com

Questions



US\$ 0.8	0.2	
US\$ 0.7	0.3	
US\$ 0.6	0.4	
US\$ 0.5	0.5	
US\$ 0.4	0.6	
US\$ 0.3	0.7	
US\$ 0.2	0.8	
US\$ 0.1	0.9	
US\$ 0.0	1.0	
Total Conversion Expenses		14.2